

Acta Crystallographica Section E

## Structure Reports

Online

ISSN 1600-5368

# 2,2'-Dimethyl-4,4'-(sulfonyldi-*p*-phenylene)dibut-3-yn-2-ol dihydrate

Shi-xu Yi, Jian Men,\* Yang Wang, Yong Xiao and Guo-wei Gao

College of Chemistry, Sichuan University, Chengdu 610064, People's Republic of China

Correspondence e-mail: gaosunday@yahoo.com.cn

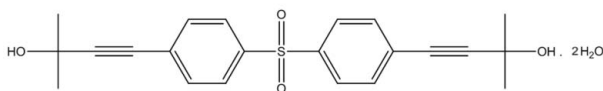
Received 13 December 2008; accepted 21 December 2008

Key indicators: single-crystal X-ray study;  $T = 292$  K; mean  $\sigma(\text{C}-\text{C}) = 0.006$  Å;  $R$  factor = 0.053;  $wR$  factor = 0.142; data-to-parameter ratio = 11.0.

The asymmetric unit of the title compound,  $\text{C}_{22}\text{H}_{22}\text{O}_4\text{S}\cdot 2\text{H}_2\text{O}$ , contains one quarter of the organic molecule and one half water molecule, the site symmetries of the S atom and the water O atom being  $mm2$  and  $m$ , respectively. The dihedral angle between the benzene rings is  $76.27(11)^\circ$ . In the crystal structure, intermolecular  $\text{O}-\text{H}\cdots\text{O}$  hydrogen bonds link the molecules into chains running parallel to the  $a$  axis.

## Related literature

For the properties and synthesis of thermosetting acetylene-terminated resins, see: Lu & Hamerton (2002). For the applications of the title compound, see: Hanson & Millburn (1984); Poon *et al.* (2006).



## Experimental

### Crystal data

$\text{C}_{22}\text{H}_{22}\text{O}_4\text{S}\cdot 2\text{H}_2\text{O}$

$M_r = 418.50$

Orthorhombic,  $Amm2$

$a = 19.751(3)$  Å

$b = 10.904(3)$  Å

$c = 5.092(2)$  Å

$V = 1096.5(7)$  Å<sup>3</sup>

$Z = 2$

Mo  $K\alpha$  radiation

$\mu = 0.18$  mm<sup>-1</sup>

$T = 292(2)$  K

$0.46 \times 0.20 \times 0.16$  mm

### Data collection

Enraf–Nonius CAD-4

diffractometer

Absorption correction: spherical

(*WinGX*; Farrugia, 1999)

$T_{\min} = 0.921$ ,  $T_{\max} = 0.972$

1211 measured reflections

888 independent reflections

756 reflections with  $I > 2\sigma(I)$

$R_{\text{int}} = 0.014$

3 standard reflections

every 50 reflections

intensity decay: 1.2%

### Refinement

$R[F^2 > 2\sigma(F^2)] = 0.053$

$wR(F^2) = 0.142$

$S = 1.09$

888 reflections

81 parameters

3 restraints

H atoms treated by a mixture of independent and constrained refinement

$\Delta\rho_{\text{max}} = 0.52$  e Å<sup>-3</sup>

$\Delta\rho_{\text{min}} = -0.40$  e Å<sup>-3</sup>

Absolute structure: Flack (1983); 284 Friedel pairs

Flack parameter:  $-0.1(2)$

**Table 1**

Hydrogen-bond geometry (Å, °).

$D-H\cdots A$	$D-H$	$H\cdots A$	$D\cdots A$	$D-H\cdots A$
$\text{O3W}-\text{H1W}\cdots\text{O2}^i$	0.78	2.07	2.800 (6)	157

Symmetry code: (i)  $-x, -y + 1, z$ .

Data collection: *DIFRAC* (Gabe & White, 1993); cell refinement: *DIFRAC*; data reduction: *NRCVAX* (Gabe *et al.*, 1989); program(s) used to solve structure: *SHELXS97* (Sheldrick, 2008); program(s) used to refine structure: *SHELXL97* (Sheldrick, 2008); molecular graphics: *ORTEP-3 for Windows* (Farrugia, 1997); software used to prepare material for publication: *SHELXL97*.

The authors are grateful to the Undergraduates' Innovative Experiment Project of Sichuan University and the Experimental Technical Project of Sichuan University (07–54) for financial support, and thank Mr Zhi-Hua Mao of Sichuan University for the X-ray data collection.

Supplementary data and figures for this paper are available from the IUCr electronic archives (Reference: RZ2282).

## References

- Farrugia, L. J. (1997). *J. Appl. Cryst.* **30**, 565.  
 Farrugia, L. J. (1999). *J. Appl. Cryst.* **32**, 837–838.  
 Flack, H. D. (1983). *Acta Cryst.* **A39**, 876–881.  
 Gabe, E. J., Le Page, Y., Charland, J.-P., Lee, F. L. & White, P. S. (1989). *J. Appl. Cryst.* **22**, 384–387.  
 Gabe, E. J. & White, P. S. (1993). *DIFRAC*. Am. Crystallogr. Assoc. Pittsburgh Meet. Abstract PA104.  
 Hanson, H. T. & Millburn, N. J. (1984). US Patent 4 439 590.  
 Lu, S. Y. & Hamerton, I. (2002). *Prog. Polym. Sci.* **27**, 1661–1712.  
 Poon, S. Y., Wong, W. Y., Cheah, K. W. & Shi, J. X. (2006). *Chem. Eur. J.* **12**, 2550–2563.  
 Sheldrick, G. M. (2008). *Acta Cryst.* **A64**, 112–122.

**supplementary materials**

*Acta Cryst.* (2009). E65, o212 [ doi:10.1107/S160053680804350X ]

## 2,2'-Dimethyl-4,4'-(sulfonyldi-*p*-phenylene)dibut-3-yn-2-ol dihydrate

S. Yi, J. Men, Y. Wang, Y. Xiao and G. Gao

### Comment

Acetylene-terminated resins are commercially employed in composite materials, in particular where high strength, light weight materials capable of withstanding high temperatures are required (Lu & Hamerton, 2002). The title compound is an important intermediate for the preparation of these acetylene-terminated compounds (Hanson & Millburn, 1984) and a series of luminescent and thermally stable materials (Poon *et al.*, 2006). We report here the synthesis and crystal structure of the title compound (Fig. 1).

The asymmetric unit of the title compound contains one fourth of the organic molecule and one half water molecule, the site symmetries of the S1 sulphur atom and the O3W water oxygen atom being *mm2* and *m*, respectively. The dihedral angles between the benzene rings is 103.73 (11)°. The displacement of the C7 atom of the 2-hydroxy-2-methyl-4-but-3-ynyl substituent from the plane of the aromatic ring is -0.1870 (14) Å. In the crystal structure, the water molecules and the hydroxy groups are involved in the formation of intermolecular O—H...O hydrogen bonds (Table 1) forming chains running parallel to the *a* axis.

### Experimental

1,1'-Sulfonylbis(4-iodobenzene) (10.00 g, 21.28 mmol), triethylamine (100 ml), PdCl<sub>2</sub>(PPh<sub>3</sub>)<sub>2</sub> (0.02 g, 0.03 mmol), PPh<sub>3</sub> (0.04 g, 0.15 mmol), 2-methylbut-3-yn-2-ol (4.29 g, 51.10 mmol) and CuI (0.04 g, 0.21 mmol) were added to a 250 ml three-necked flask, and the mixture heated to reflux for 10 h. After completion of the reaction, the mixture was filtered and the filtrate was evaporated under reduced pressure. Single crystals suitable for X-ray analysis were obtained by slow evaporation of an ethanol/ water solution (10:1 v/v) (6.90 g, 85% yield; m.p. 435–437 K).

### Refinement

The hydroxy H atom was located in a difference Fourier map and refined isotropically with the O—H distance restrained to 0.82 Å. The water H atom was located in a difference Fourier map and refined as riding. All other H atoms were positioned geometrically and refined using a riding model, with C—H = 0.93–0.96 Å and  $U_{\text{iso}}(\text{H}) = 1.2U_{\text{eq}}(\text{C})$  or  $1.5U_{\text{eq}}(\text{C})$  for methyl H atoms.

### Figures

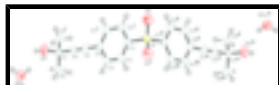


Fig. 1. The molecular structure of the title compound, with displacement ellipsoids drawn at the 30% probability level [symmetry codes: (i) = *x*, 1-*y*, *z*; (ii) = 1-*x*, 1-*y*, *z*; (iii) = 1-*x*, *y*, *z*].

## 2,2'-Dimethyl-4,4'-(sulfonyldi-*p*-phenylene)dibut-3-yn-2-ol dihydrate

### Crystal data

$C_{22}H_{22}O_4S \cdot 2H_2O$	$F_{000} = 444$
$M_r = 418.50$	$D_x = 1.267 \text{ Mg m}^{-3}$
Orthorhombic, <i>Amm</i> 2	Mo $K\alpha$ radiation
Hall symbol: A 2 -2	$\lambda = 0.71073 \text{ \AA}$
$a = 19.751 (3) \text{ \AA}$	Cell parameters from 19 reflections
$b = 10.904 (3) \text{ \AA}$	$\theta = 4.9\text{--}7.6^\circ$
$c = 5.092 (2) \text{ \AA}$	$\mu = 0.18 \text{ mm}^{-1}$
$V = 1096.5 (7) \text{ \AA}^3$	$T = 292 (2) \text{ K}$
$Z = 2$	Block, colourless
	$0.46 \times 0.20 \times 0.16 \text{ mm}$

### Data collection

Enraf-Nonius CAD-4 diffractometer	$R_{\text{int}} = 0.014$
Radiation source: fine-focus sealed tube	$\theta_{\text{max}} = 25.5^\circ$
Monochromator: graphite	$\theta_{\text{min}} = 1.0^\circ$
$T = 292(2) \text{ K}$	$h = -23 \rightarrow 23$
$\omega/2\theta$ scans	$k = -13 \rightarrow 13$
Absorption correction: for a sphere (WinGX; Farrugia, 1999)	$l = -6 \rightarrow 3$
$T_{\text{min}} = 0.921$ , $T_{\text{max}} = 0.972$	3 standard reflections
1211 measured reflections	every 50 reflections
888 independent reflections	intensity decay: 1.2%
756 reflections with $I > 2\sigma(I)$	

### Refinement

Refinement on $F^2$	Hydrogen site location: mixed
Least-squares matrix: full	H atoms treated by a mixture of independent and constrained refinement
$R[F^2 > 2\sigma(F^2)] = 0.053$	$w = 1/[\sigma^2(F_o^2) + (0.0747P)^2 + 1.0802P]$
$wR(F^2) = 0.142$	where $P = (F_o^2 + 2F_c^2)/3$
$S = 1.09$	$(\Delta/\sigma)_{\text{max}} < 0.001$
888 reflections	$\Delta\rho_{\text{max}} = 0.52 \text{ e \AA}^{-3}$
81 parameters	$\Delta\rho_{\text{min}} = -0.40 \text{ e \AA}^{-3}$
3 restraints	Extinction correction: SHELXL97 (Sheldrick, 2008), $F_c^* = kF_c[1 + 0.001x F_c^2 \lambda^3 / \sin(2\theta)]^{-1/4}$
Primary atom site location: structure-invariant direct methods	Extinction coefficient: 0.011 (3)
Secondary atom site location: difference Fourier map	Absolute structure: Flack (1983); 284 Friedel pairs
	Flack parameter: $-0.1 (2)$

*Special details*

**Geometry.** All e.s.d.'s (except the e.s.d. in the dihedral angle between two l.s. planes) are estimated using the full covariance matrix. The cell e.s.d.'s are taken into account individually in the estimation of e.s.d.'s in distances, angles and torsion angles; correlations between e.s.d.'s in cell parameters are only used when they are defined by crystal symmetry. An approximate (isotropic) treatment of cell e.s.d.'s is used for estimating e.s.d.'s involving l.s. planes.

**Refinement.** Refinement of  $F^2$  against ALL reflections. The weighted  $R$ -factor  $wR$  and goodness of fit  $S$  are based on  $F^2$ , conventional  $R$ -factors  $R$  are based on  $F$ , with  $F$  set to zero for negative  $F^2$ . The threshold expression of  $F^2 > \sigma(F^2)$  is used only for calculating  $R$ -factors(gt) *etc.* and is not relevant to the choice of reflections for refinement.  $R$ -factors based on  $F^2$  are statistically about twice as large as those based on  $F$ , and  $R$ -factors based on ALL data will be even larger.

*Fractional atomic coordinates and isotropic or equivalent isotropic displacement parameters ( $\text{\AA}^2$ )*

	<i>x</i>	<i>y</i>	<i>z</i>	$U_{\text{iso}}^*/U_{\text{eq}}$
S1	0.5000	0.5000	0.5447 (4)	0.0400 (6)
O1	0.5000	0.6154 (4)	0.6856 (9)	0.0545 (12)
O2	0.0928 (2)	0.5000	-0.3050 (9)	0.0541 (12)
H2O	0.0592 (5)	0.5000	-0.398 (4)	0.065 (8)*
C1	0.4296 (2)	0.5000	0.3319 (11)	0.0372 (13)
C2	0.40288 (19)	0.3902 (3)	0.2490 (10)	0.0452 (10)
H2	0.4218	0.3167	0.3052	0.054*
C3	0.34760 (18)	0.3895 (4)	0.0814 (10)	0.0501 (11)
H3	0.3290	0.3156	0.0255	0.060*
C4	0.3202 (2)	0.5000	-0.0022 (12)	0.0426 (15)
C5	0.2615 (3)	0.5000	-0.1766 (12)	0.0445 (14)
C6	0.2125 (2)	0.5000	-0.3109 (12)	0.0401 (13)
C7	0.1511 (2)	0.5000	-0.4712 (13)	0.0371 (12)
C8	0.1503 (2)	0.3873 (3)	-0.6405 (8)	0.0519 (11)
H8A	0.1344	0.3188	-0.5396	0.078*
H8B	0.1953	0.3708	-0.7024	0.078*
H8C	0.1208	0.4003	-0.7877	0.078*
O3W	0.0000 (3)	0.3082 (3)	-0.2418 (8)	0.0559 (12)*
H1W	-0.0332	0.3467	-0.2448	0.078 (16)*

*Atomic displacement parameters ( $\text{\AA}^2$ )*

	$U^{11}$	$U^{22}$	$U^{33}$	$U^{12}$	$U^{13}$	$U^{23}$
S1	0.0347 (9)	0.0578 (12)	0.0276 (11)	0.000	0.000	0.000
O1	0.053 (2)	0.071 (3)	0.040 (3)	0.000	0.000	-0.022 (2)
O2	0.0384 (18)	0.080 (3)	0.044 (3)	0.000	0.001 (2)	0.000
C1	0.030 (2)	0.052 (3)	0.030 (3)	0.000	-0.002 (2)	0.000
C2	0.0437 (18)	0.044 (2)	0.048 (3)	0.0055 (17)	-0.0050 (19)	0.003 (2)
C3	0.0418 (19)	0.055 (2)	0.053 (3)	-0.0022 (16)	-0.010 (2)	-0.010 (2)
C4	0.029 (2)	0.064 (3)	0.035 (4)	0.000	0.004 (2)	0.000
C5	0.040 (3)	0.063 (3)	0.031 (3)	0.000	0.003 (3)	0.000
C6	0.034 (3)	0.050 (3)	0.037 (3)	0.000	0.004 (3)	0.000

## supplementary materials

C7	0.037 (2)	0.045 (3)	0.029 (3)	0.000	-0.002 (3)	0.000
C8	0.066 (2)	0.049 (2)	0.041 (3)	-0.0030 (19)	-0.002 (2)	0.000 (2)

### Geometric parameters (Å, °)

S1—O1	1.448 (4)	C3—H3	0.9300
S1—O1 <sup>i</sup>	1.448 (4)	C4—C3 <sup>ii</sup>	1.388 (5)
S1—C1	1.763 (5)	C4—C5	1.461 (7)
S1—C1 <sup>i</sup>	1.763 (5)	C5—C6	1.185 (7)
O2—C7	1.428 (7)	C6—C7	1.462 (7)
O2—H2O	0.817 (10)	C7—C8	1.501 (5)
C1—C2 <sup>ii</sup>	1.375 (5)	C7—C8 <sup>ii</sup>	1.501 (5)
C1—C2	1.375 (5)	C8—H8A	0.9600
C2—C3	1.386 (5)	C8—H8B	0.9600
C2—H2	0.9300	C8—H8C	0.9600
C3—C4	1.388 (5)	O3W—H1W	0.7779
O1—S1—O1 <sup>i</sup>	120.6 (4)	C3 <sup>ii</sup> —C4—C5	119.7 (3)
O1—S1—C1	107.72 (13)	C3—C4—C5	119.7 (3)
O1 <sup>i</sup> —S1—C1	107.72 (13)	C6—C5—C4	177.8 (6)
O1—S1—C1 <sup>i</sup>	107.72 (13)	C5—C6—C7	178.7 (6)
O1 <sup>i</sup> —S1—C1 <sup>i</sup>	107.72 (13)	O2—C7—C6	109.7 (5)
C1—S1—C1 <sup>i</sup>	104.1 (4)	O2—C7—C8	109.4 (3)
C7—O2—H2O	108.2 (13)	C6—C7—C8	109.2 (3)
C2 <sup>ii</sup> —C1—C2	121.1 (5)	O2—C7—C8 <sup>ii</sup>	109.4 (3)
C2 <sup>ii</sup> —C1—S1	119.4 (3)	C6—C7—C8 <sup>ii</sup>	109.2 (3)
C2—C1—S1	119.4 (3)	C8—C7—C8 <sup>ii</sup>	109.9 (5)
C1—C2—C3	119.8 (4)	C7—C8—H8A	109.5
C1—C2—H2	120.1	C7—C8—H8B	109.5
C3—C2—H2	120.1	H8A—C8—H8B	109.5
C2—C3—C4	119.4 (4)	C7—C8—H8C	109.5
C2—C3—H3	120.3	H8A—C8—H8C	109.5
C4—C3—H3	120.3	H8B—C8—H8C	109.5
C3 <sup>ii</sup> —C4—C3	120.5 (5)		
O1—S1—C1—C2 <sup>ii</sup>	24.6 (5)	C2—C3—C4—C3 <sup>ii</sup>	-0.2 (9)
O1 <sup>i</sup> —S1—C1—C2 <sup>ii</sup>	156.2 (4)	C2—C3—C4—C5	-179.3 (5)
C1 <sup>i</sup> —S1—C1—C2 <sup>ii</sup>	-89.6 (4)	C3 <sup>ii</sup> —C4—C5—C6	-89.5 (5)
O1—S1—C1—C2	-156.2 (4)	C3—C4—C5—C6	89.5 (5)
O1 <sup>i</sup> —S1—C1—C2	-24.6 (5)	C4—C5—C6—C7	0.00 (3)
C1 <sup>i</sup> —S1—C1—C2	89.6 (4)	C5—C6—C7—O2	0.00 (2)
C2 <sup>ii</sup> —C1—C2—C3	-0.7 (8)	C5—C6—C7—C8	-119.9 (3)
S1—C1—C2—C3	-179.9 (4)	C5—C6—C7—C8 <sup>ii</sup>	119.9 (3)
C1—C2—C3—C4	0.5 (7)		

Symmetry codes: (i)  $-x+1, -y+1, z$ ; (ii)  $x, -y+1, z$ .

*Hydrogen-bond geometry* ( $\text{\AA}$ ,  $^\circ$ )

$D-H\cdots A$	$D-H$	$H\cdots A$	$D\cdots A$	$D-H\cdots A$
$O3W-H1W\cdots O2^{iii}$	0.78	2.07	2.800 (6)	157

Symmetry codes: (iii)  $-x, -y+1, z$ .

Fig. 1

